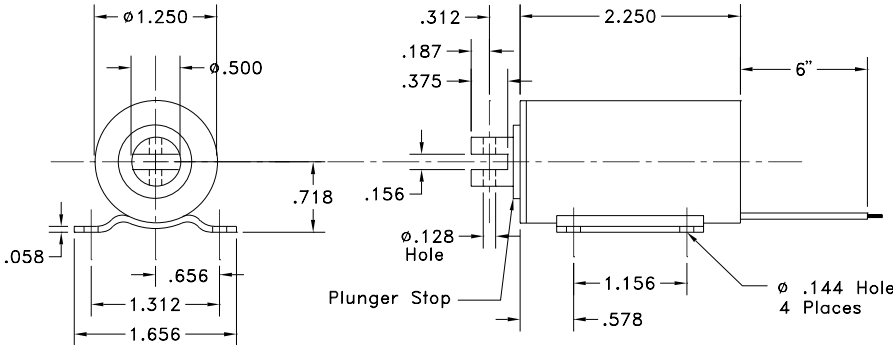
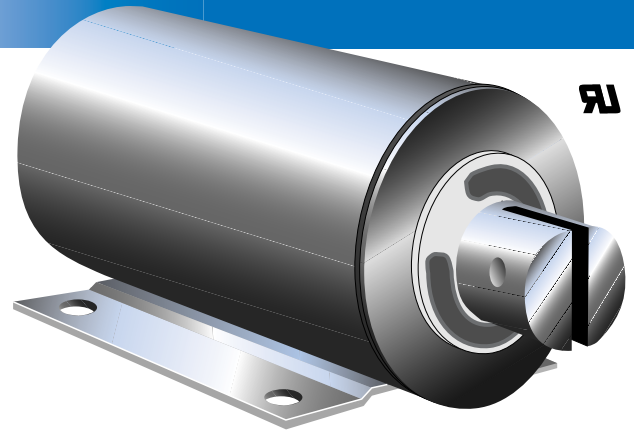
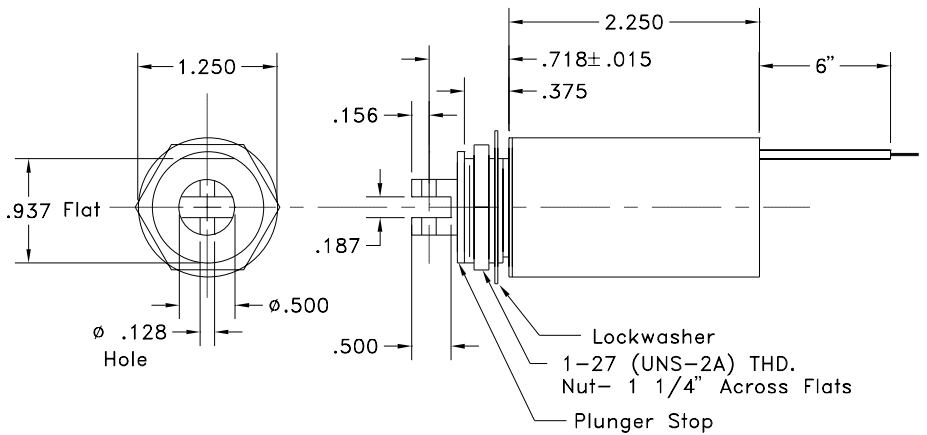


# SERIES TS 1250 B



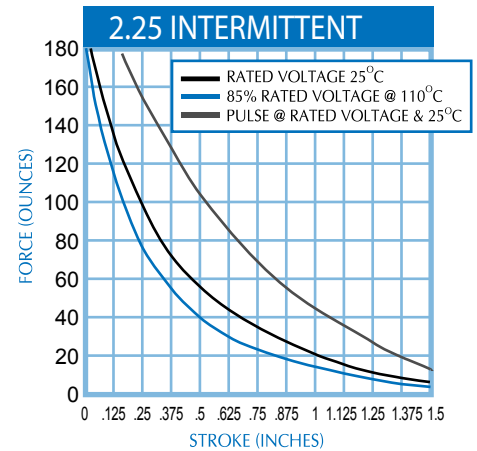
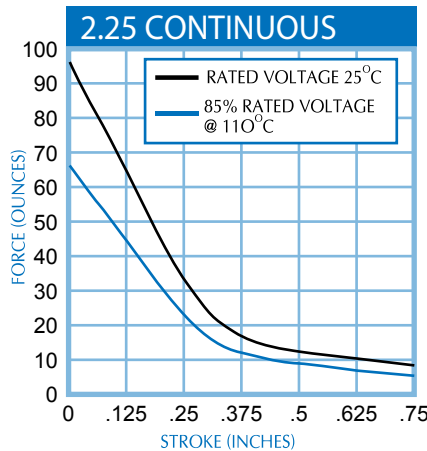
LENGTH INCHES	2.250			
	DUTY	CONT.	INT.	PULSE
D.C. POWER WATTS	12	52	130	
STD. D.C. VOLTAGES	STD. DC COIL RESISTANCE (OHMS)			
6	3	N/R	N/R	
12	12	3	1.1	
24	48	11	4.4	
110	1000	230	93	



TS 1250

## SPECIFICATIONS

1. MAXIMUM OPERATING TEMPERATURE: 130°C
2. LIFE EXPECTANCY UNDER OPTIMUM LOAD: 10<sup>6</sup> CYCLES
3. DIELECTRIC STRENGTH: 1500 V. RMS
4. LEADS: AWG - 22 - U/L
5. TOTAL WEIGHT: 9.7 oz. (275 grams) MAX.
6. PLUNGER WEIGHT: 1.94 oz. (55 grams) MAX.



INTERMITTENT DUTY CYCLE AT NOMINAL VOLTAGE IS 1 MINUTE MAXIMUM ON TIME AT 10% DUTY. PULSE DUTY CYCLE IS 100 MILLISECONDS ON AT 10% DUTY.