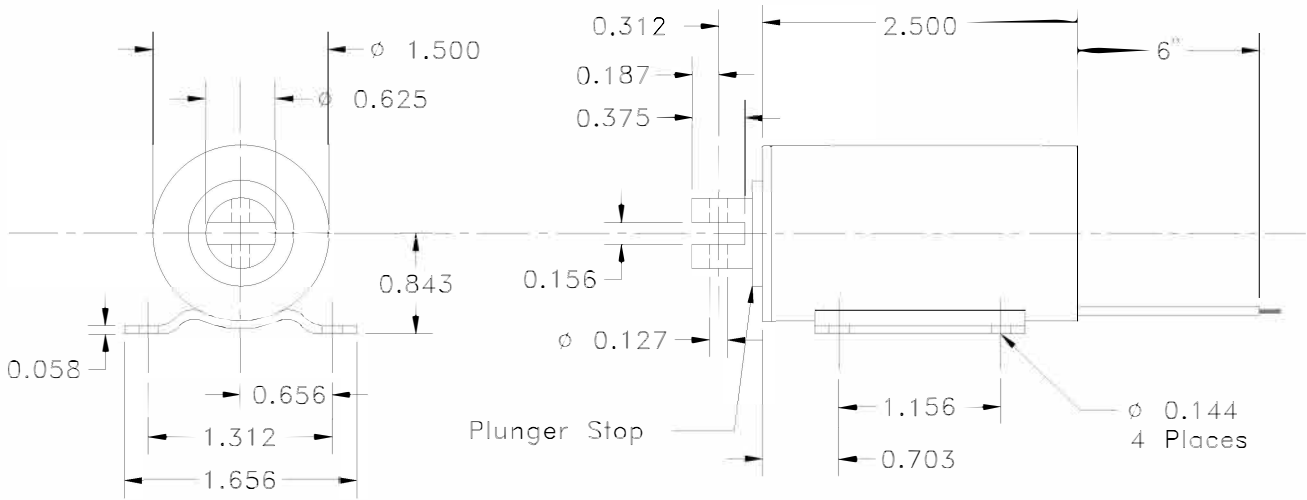
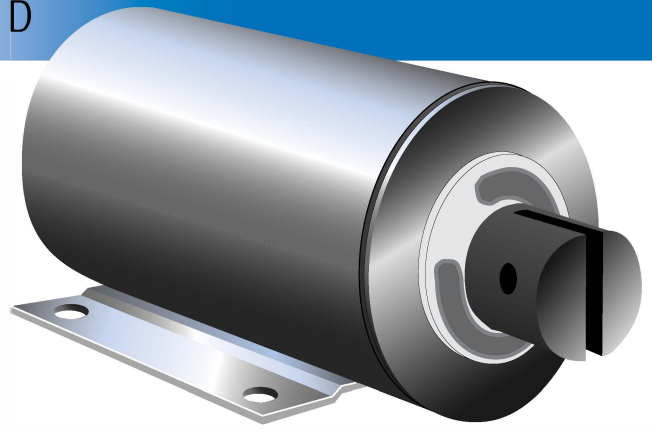
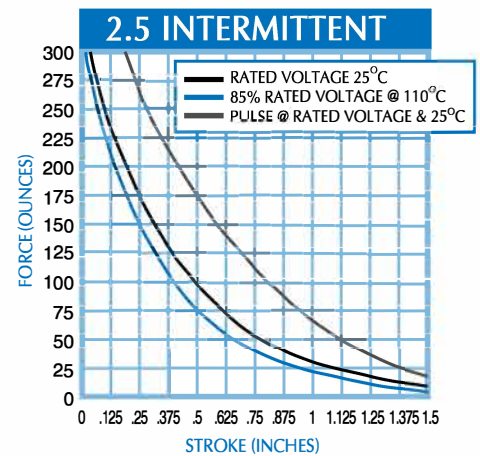
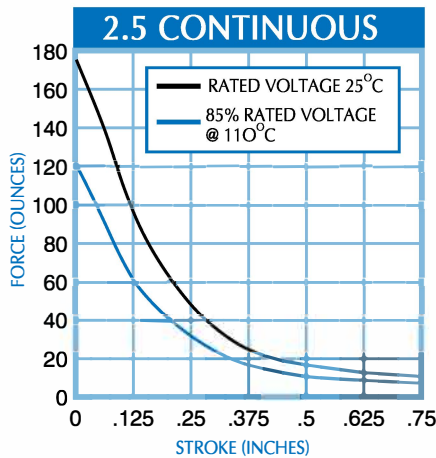


# SERIES TS 1500 B



LENGTH INCHES	2.500			
	DUTY	CONT.	INT.	PULSE
D.C. POWER WATTS	17	68	170	
STD. D.C. VOLTAGES	STD. DC COIL RESISTANCE (OHMS)			
6	2	N/R	N/R	
12	8	2	0.93	
24	33	8	3.4	
110	700	180	72	



## SPECIFICATIONS

1. MAXIMUM OPERATING TEMPERATURE: 130°C
2. LIFE EXPECTANCY UNDER OPTIMUM LOAD: 10<sup>6</sup> CYCLES
3. DIELECTRIC STRENGTH: 1500 V. RMS
4. LEADS: AWG - 22 - U/L
5. TOTAL WEIGHT: 16 oz. (450 grams) MAX.
6. PLUNGER WEIGHT: 3.3 oz. (95 grams) MAX.

INTERMITTENT DUTY CYCLE AT NOMINAL VOLTAGE IS 1 MINUTE MAXIMUM ON TIME AT 10% DUTY. PULSE DUTY CYCLE IS 100 MILLISECONDS ON AT 10% DUTY.